



HOLTVILLE UNIFIED SCHOOL DISTRICT

Governing Board of Trustees

Regular Board Meeting

June 13, 2022

Board of Trustees

Matt Hester, President

Robin Cartee, Clerk

Kevin Grizzle, Member

Jared Garewal, Member

Ben Abatti Jr., Member

Superintendent

Celso Ruiz

Assistant Superintendent

John Paul Wells



**REGULAR MEETING
of the
BOARD OF TRUSTEES
HOLTVILLE UNIFIED SCHOOL DISTRICT**

Monday, June 13, 2022

CLOSED SESSION 5:00 P.M., OPEN SESSION 6:00 P.M.

Holtville Unified School District, Board Room, 621 E 6th Street Ave., Holtville, CA. 92250

From time-to-time writings that are public records, which are related to open session items on an agenda for a regular meeting, may be distributed to Trustees after the posting of the agenda. Whenever this occurs, such writings will be available for public inspection in the Office of the Superintendent located at 621 E. Sixth Street, Holtville, Ca. 92250

Members of the public who require disability accommodation in order to participate in the meeting should contact the Superintendent at (760)356-2974, or in writing, at least 24 hours prior to the meeting. (Government Code section 54954.2).

1. PRELIMINARY

Call to Order

Flag Salute

Roll Call

Present Absent

Matt Hester, President

Robin Cartee, Clerk

Kevin Grizzle, Member

Jared Garewal, Member

Ben Abatti Jr., Member

Arianna Venegas, Student Rep.

_____	_____
_____	_____
_____	_____
_____	_____
_____	_____
_____	_____

2. MODIFICATIONS OF THE ORDER OF THE AGENDA, IF ANY.

Motion: _____ Second: _____ Ayes: ____ Nays: ____ Vote: ____

**3. STATEMENTS FROM THE PUBLIC REGARDING ITEMS ON THE
CLOSED SESSION AGENDA.**

At this time, members of the public may address the Board only as to items on the closed session agenda. If you wish to address the Board, please stand, give your name and address and proceed to the podium from which you will speak. Individual presentations shall not be for more than three (3) minutes and the total time for this purpose shall not exceed twenty minutes.

4. CLOSED SESSION

A) Negotiations with Holtville Teachers Association – Pursuant to Government Code Section 3549.1

B) Negotiations with the CSEA Chapter 338 – Pursuant to Government Code Section 3549.1

*C) Closed Session in accordance with Government Code section 54957: Public Employee
Discipline/Dismissal/Release*

5. REPORTABLE CLOSED SESSION ACTIONS:

**BOARD OF TRUSTEES
HOLTVILLE UNIFIED SCHOOL DISTRICT
REGULAR MEETING – June 13, 2022
AGENDA PAGE 2**

6. RECOGNITIONS

Migrant – Mrs. Lopez

7. PUBLIC COMMENT ON ITEMS ON THE OPEN SESSION AGENDA AND ON NON AGENDA ITEMS OF INTEREST TO THE PUBLIC THAT ARE WITHIN THE SUBJECT MATTER

JURISDICTION OF THE BOARD. *At this time, members of the public may address the Board only as to items on the open session agenda or items within the subject matter jurisdiction of the Board. Public comment will not be taken during the Board's consideration of an item on the open session agenda. If you wish to address the Board, please stand, give your name and address and proceed to the podium from which you will speak. Individual presentations shall not be for more than three (3) minutes and the total time for this purpose shall not exceed twenty minutes. In accordance with the Brown Act, unless an item has been placed on the published agenda, there shall be no action taken. The Board may 1) acknowledge receipt of the information, 2) refer to staff for further study, or 3) refer the matter to the next agenda.*

8. COMMUNICATIONS FROM THE SCHOOL DISTRICT

*Holtville Teachers Association
California School Employees Association
Governing Board
Assistant Superintendent
Superintendent*

9. CONSENT AGENDA

All matters on the Consent Agenda are considered by the Board to be routine and will be enacted by the Board in one motion in the form listed below. The Superintendent and staff recommend approval of all Consent Agenda items.

A. GENERAL FUNCTION

- 1) Adoption of Minutes: May 16, 2022 & June 9, 2022
(Supplemental Information)*

Pgs. 2-5

B. FINANCE AND BUSINESS

- 1) Warrant Orders week beginning 5/12/22 to week ending 6/2/22
(Supplemental Information)*

Pgs. 7-20

C. PERSONNEL SERVICES

- 1) Certificated Resignation
2) Classified Resignation/Retirement
3) Classified Employment
4) Classified Paternity Leave
5) Summer School Employment*

Pg. 22

Pg. 23

Pg. 24

Pg. 25

Pgs. 26-27

**BOARD OF TRUSTEES
HOLTVILLE UNIFIED SCHOOL DISTRICT
REGULAR MEETING – June 13, 2022
AGENDA PAGE 3**

CONSENT AGENDA continued

D. GENERAL BUSINESS

The Board is asked to approve the following items:

- 1) 2022-23 HUSD Board Meeting Schedule Pg. 29
- 2) MOU between HUSD & the School Librarian Regarding Services for the 2022-23 SY Pg. 30-32

Motion: _____ Second: _____ Ayes: ____ Nays: ____ Vote: ____ - ____

10. PUBLIC HEARING

- A) Public Hearing regarding the Local Continuity and Accountability Plan (LCAP)
(Mr. Velazquez) Pg. 34

11. ACTION/DISCUSSION ITEMS

The Board is asked to approve the following items:

- A) Approve the Side Letter of Agreement Between HUSD and the Holtville Teachers Association
Regarding the Impacts & Effects of AB 130 & the COVID-19 Public Health Emergency
(Mr. Ruiz) Pgs. 36-37

Motion: _____ Second: _____
Ayes: _____ Nays: _____ Vote: ____ - ____

- B) Approve Municipal Lease of IC Bus Model CE School Bus through Creative Bus Sales, utilizing
South County Support Services Agency of Fresno piggyback bid# 2122-SC11-01 C
(Mr. Wells) Pgs. 38-55

Motion: _____ Second: _____
Ayes: _____ Nays: _____ Vote: ____ - ____

12. FUTURE BOARD MEETING DATE

*Monday, June 20, 2022 is the next Regular Board Meeting
Thursday, June 23, 2022 is the next Special Board Meeting*

13. ADJOURNMENT

MISSION STATEMENT

The Mission of the Holtville Unified School District is to ensure a standards-based curriculum that promotes excellence in academic, social and emotional growth for every student through the establishment of strong parent/school/community partnerships in a stable and safe learning environment.

HOLTVILLE UNIFIED SCHOOL DISTRICT
School Board Meeting Agenda

MINUTES

**Holtville Unified School District
Regular Board Meeting
Minutes – May 16, 2022**

{Page 1 of 3}

The Board of Trustees of the Holtville Unified School District met in a Regular Session on May 16, 2022, at the Holtville Unified School District Board Room 621 E 6th Street, Holtville, California. The meeting was called to order at 5:00 p.m. by the Presiding Chairman.

MEMBERS PRESENT: Matt Hester, President; Kevin Grizzle, Member; Jared Garewal, Member; Ben Abatti Jr., Member; Celso Ruiz, Superintendent; John Paul Wells, Assistant Superintendent; Arianna Venegas, Student Rep.

MEMBERS ABSENT: Robin Cartee, Clerk

MODIFICATION OF THE AGENDA: None

STATEMENTS FROM THE PUBLIC REGARDING ITEMS ON THE CLOSED SESSION AGENDA. None

CLOSED SESSION

Negotiations with Holtville Teachers Association – Pursuant to Government Code Section 3549.1

REPORT OF CLOSED SESSION In: 5:05 p.m. Out: 6:18 p.m.
Nothing to report

RECOGNITIONS

Mr. Arevalo introduced the HHS FFA advisors Mrs. Sutter and Mr. Cronkright. Mrs. Sutter introduced some of the FFA members that attended FFA National Conference in Sacramento, CA. They also presented a video with pictures from the trip. FFA members Ariana Venegas, Erika Hurtado, Alondra Gonzalez, David Magallon, Loren Dhaliwal, Elle Moiola, and Owen Osterkamp all shared their experience at the conference, including the awards they received.

ORAL COMMUNICATION FROM THE PUBLIC ON NON AGENDA ITEMS AND/OR ITEMS OF INTEREST TO THE PUBLIC THAT ARE WITHIN THE SUBJECT MATTER JURISDICTION OF THE BOARD.

ICOE Board Member Lucy Hendry gave the board members a printed copy of the 2020-2022 Report to the Community. More information is available on the ICOE website.

COMMUNICATION FROM THE SCHOOL DISTRICT

HTA – wishing everyone a smooth end of the year.

Student Rep. Arianna Venegas – Senior testing will begin next week. There was a Powderpuff football game, Seniors/Freshman against Juniors/Sophomores. ASB elections will be held the following week and there is a MES competition this weekend.

Trustee Abatti congratulated the FFA students that were recognized.

Trustee Grizzle congratulated the students recognized.

Trustee Cartee congratulated the FFA students.

President Hester congratulated the FFA students on their accomplishments.

Greg Cox gave an update on the HMS gym construction. They are currently working on the final touches of the gym flooring. They are finishing up the tile and grout in the bathroom. The exterior rock will begin next week along with the install of the partitions.

Mr. Wells gave a monthly business briefing update. The month ending March 2022 there was an effective rate of return of 0.82%. The HUSD cash balances by fund total \$14,620,292. The governor's May Revise was issued. He projects caution of possible crash looming with a 6.56% COLA. He proposes \$2.1 billion to increase LCFF base funding. Mr. Wells added that the Universal TK transition has changed, any student turning 5 from 9/2 thru 2/2 can enroll in TK, and there is a 12:1 student to teacher ratio.

Mr. Ruiz congratulated the FFA students and the teachers.

INFORMATION ITEMS

Mr. Velazquez presented the HUSD LCAP Goals Planned Actions/Services 2021-24. The action, title, description, and total funds were laid out in the packet. He gave a brief description of each goal.

Mr. Arevalo presented a power point on the CTE pathways at HHS. HHS currently offers 7 CTE pathways. Which include Plant & Soil, Ag. Science, Ag. Mechanics, Business Management, Patient Care, Public Safety, and Systems Diagnostics, Service & Repair. A survey was given to HHS students asking which CTE pathway they would like added at HHS. Out of 411 responses 88 students would like to see Food Service & Hospitality, 69 would like Entrepreneurship Self Employment and 49. Several students would like to have a Drivers Ed course as well as a Life Skills class.

CONSENT AGENDA

GENERAL FUNCTIONS

Moved by Trustee Grizzle, Seconded by Trustee Garewal to approve the following consent agenda items as follows: GENERAL FUNCTION – Adoption of Minutes: April 11, 2022 & May 4, 2022. FINANCE AND BUSINESS – Warrant orders week beginning 4/14/22 to week ending 5/12/22. PERSONNEL SERVICES – Certificated Maternity leave of Aileen Zevada, Teacher (Finley); Griselda Gallegos, Teacher (Finley). Classified Resignation of Charenni Carrillo, Health Clerk (HMS); Gabriela Medina, Paraprofessional (Finley). Classified Retirement of Mary Strain, Cafeteria Worker (District); Hortencia Medel, School Secretary Sam Webb).

CONSENT AGENDA

GENERAL FUNCTIONS continued

GENERAL BUSINESS – Donation to FFA of 5 breeding goats and alfalfa hay from Judy Abatti. Donation of \$250 from Vessey & Co. to HHS Robotics. Donation of \$250 from the Woman's Club of Holtville to HHS ASB. MESA Program Participation Agreement with HHS. MOU between IVROP & HUSD for CTE supportive services. MOU between ICOE & HUSD regarding Payroll Clerk Services. MOU between ICOE & HUSD regarding the ERP System. Agricultural Career Technical Education Incentive Grant 2022-23 Application for Funding. All approved by unanimous votes, Ayes: 4, Nays: 0. Vote: 4-0.

ACTION/DISCUSSION ITEMS

Moved by Trustee Abatti, Seconded by Trustee Grizzle to approve Board Resolution 2021/22-012 Delegation of Authority to Pay and Sign Proper Legal Bills, Billings, Invoices, and Orders Under Specific Limitations. Roll Call Vote: Hester; Aye: Grizzle: Aye; Garewal: Aye; Abatti: Aye. Passed by unanimous votes Ayes: 4, Nays: 0. Moved by Trustee Grizzle, Seconded by Trustee Garewal to approve Board Resolution 2021/22-013 Allowing the Class of 2024 to Maintain Funds Within the Associated Student Body Until June 30, 2023. Roll Call Vote: Hester; Aye: Grizzle: Aye; Garewal: Aye; Abatti: Aye. Passed by unanimous votes Ayes: 4, Nays: 0. Moved by Trustee Garewal, Seconded by Trustee Abatti to approve the Measure G Building Fund General Obligation Bonds Audit Report. Passed by unanimous votes Ayes: 4, Nays: 0. Move by Trustee Abatti, Seconded by Trustee Grizzle to approve purchase of 3 portable classroom buildings from Williams Scotsman, Inc. in the amount of \$253,441.01 under Omnia Piggyback Contract Proposal Number CA-R210503-315328. Passed by unanimous votes Ayes: 4, Nays: 0.

FUTURE BOARD MEETING DATE

Regular Board Meeting: Monday, June 13, 2022

Regular Board Meeting: Monday, June 20, 2022

Special Board Meeting: Thursday, June 23, 2022

ADJOURNMENT

The meeting adjourned at 7:26 p.m.

**Robin Cartee, Clerk
Holtville Unified School District
Board of Trustees**

**Holtville Unified School District
Special Board Meeting
Minutes – June 2, 2022**

{Page 1 of 1}

The Board of Trustees of the Holtville Unified School District met in a Special Session on June 2, 2022, at the Holtville Unified School District Board Room, 621 East Sixth Street, Holtville, California. The meeting was called to order at 5:07 p.m. by the Presiding Chairman.

MEMBERS PRESENT: Matt Hester, President; Robin Cartee, Clerk; Kevin Grizzle, Member; Jared Garewal, Member; Ben Abatti Jr.; Celso Ruiz, Superintendent; John Paul Wells, Assistant Superintendent.

MEMBERS ABSENT: Arianna Venegas, Student Rep.

MODIFICATION OF THE AGENDA: None

STATEMENTS FROM THE PUBLIC REGARDING ITEMS ON THE CLOSED SESSION AGENDA. None

CLOSED SESSION

- A) Negotiations with the Holtville Teachers Association – Pursuant to Government Code Section 3549.1
- B) Negotiations with the CSEA Chapter 338 – Pursuant to Government Code Section 3549.1

REPORT OF CLOSED SESSION In: 5:10 p.m. **Out:** 7:08 p.m.
Nothing to report

ORAL COMMUNICATION FROM THE PUBLIC ON NON AGENDA ITEMS AND/OR ITEMS OF INTEREST TO THE PUBLIC THAT ARE WITHIN THE SUBJECT MATTER JURISDICTION OF THE BOARD.
Nothing

FUTURE BOARD MEETING DATE

Monday, June 13, 2022 Regular Board Meeting
Monday, June 20, 2022 Regular Board Meeting
Thursday, June 23, 2022 Special Board Meeting

ADJOURNMENT

The meeting adjourned at 7:09 p.m.

**Robin Cartee, Clerk
Holtville Unified School District
Board of Trustees**

HOLTVILLE UNIFIED SCHOOL DISTRICT
School Board Meeting Agenda

WARRANTS

Register 000190 - 05/12/2022

Bank Account COUNTY - County

Number	Amount	Status	Fund	Cancel Register (Date)	Payee
Bank Account COUNTY - County, Register 000190, Dated 05/12/2022					
22176937	130.00	Printed	010		AKESO OCCUPATIONAL HEALTH (001026/2)
22176938	3,058.50	Printed	010		AMAZON CAPITAL SERVICES, INC (000822/1)
22176939	375.00	Printed	010		APEX LEARNING (000036/1)
22176940	4,299.88	Printed	010		BDJtech (000925/2)
22176941	1,656.22	Printed	010		CALIBER SCREENING (000075/1)
22176942	60.00	Printed	010		CALIFORNIA INTERSCHOLASTIC FED (000080/4)
22176943	74.58	Printed	010		CAPITAL ONE TRADE CREDIT (000972/3)
22176944	3,464.03	Printed	010		COSTCO (000110/1)
22176945	172.88	Printed	010		COUNTY MOTOR PARTS (000111/3)
22176946	3,499.19	Printed	010		D LUPITAS RESTAURANT (000119/1)
22176947	261.92	Printed	010		DE LIRA, ANTHONY (001034/1)
22176948	244.31	Printed	130		DEL SOL MARKET (000125/1)
22176949	4,442.29	Printed	010		ENTERPRISE FM TRUST (000767/1)
22176950	26.38	Printed	010		FERGUSON ENTERPRISES INC (000156/2)
22176951	4,494.09	Printed	010		GIGA KOM (000179/2)
22176952	954.46	Printed	130		HOLLANDIA DAIRY, INC (000608/1)
22176953	202.59	Printed	010		IRUNGARARY, MARIA (000534/1)
22176954	3,575.00	Printed	010		Isom Advisors, A Division of Urban Futures (000410/2)
22176955	2,055.00	Printed	010		J-Tech Digital, Inc. (001024/1)
22176956	2,610.00	Printed	010		JAMF SOFTWARE, LLC (000988/2)
22176957	154.83	Printed	010		JOHN DEERE FINANCIAL (000324/1)
22176958	278.97	Printed	010		KC MANUFACTURING INC (000252/1)
22176959	243.58	Printed	010		LANSMAN, AMY (000545/1)
22176960	251.55	Printed	010		LOPEZ, MARIA C. (000539/1)
22176961	250.00	Printed	010		LORI'S SANITATION, LLC (000710/1)
22176962	251.14	Printed	010		MANGE, MARCI (000553/1)
22176963	250.00	Printed	010		MIGUEL MATA (000496/1)
22176964	456.47	Printed	010		Music & Arts (000489/2)
22176965	680.50	Printed	010		NATIONAL FFA ORGANIZATION (000285/2)
22176966	225.00	Printed	010		PADILLA JORGE F (000297/1)
22176967	1,353.70	Printed	010		Pixabytes Solutions, Inc (000884/1)
22176968	1,017.35	Printed	010		RUIZ, CELSO (000576/1)
22176969	3,351.07	Printed	130		SHAMROCK FOODS COMPANY (000356/2)
22176970	919.80	Printed	010		SHI SOFTWARE (000358/1)
22176971	1,533.25	Printed	010		Suttler, Jennifer (000754/2)

Register 000190 - 05/12/2022

Bank Account COUNTY - County

Number	Amount	Status	Fund	Cancel Register (Date)	Payee
Bank Account COUNTY - County, Register 000190, Dated 05/12/2022 (continued)					
22176972	2,705.70	Printed	130		SYSO FOOD SERVICES OF SAN DIE (000384/1)
22176973	281.26	Printed	010		TK ELEVATOR CORP (000706/2)
22176974	8.05	Printed	010		UPS (000409/1)
22176975	1,272.25	Printed	130		VALLEY PRODUCE (000783/2)
22176976	177.96	Printed	010		VANACKER, CHAD (000584/1)
22176977	400.00	Printed	130		VENEGAS, GILBERT (000712/1)

51,718.75 Number of Items 41 Totals for Register 000190

Org Summary			
Holtville Unified School District			
Check #	22176937 through	22176977 Total Count	41
			\$51,718.75

Register 000191 - 05/19/2022

Payee

Cancel Register (Date)

Fund

Amount Status

Number

Bank Account COUNTY - County, Register 000191, Dated 05/19/2022

22177769	10,665.37	Printed	010	A1 GOLF CARS (000009/1)
22177770	14.00	Printed	010	AMAZON CAPITAL SERVICES, INC (000822/1)
22177771	4,581.72	Printed	010	ARTIANO SHINOFF ABED BLUMENFEL (000041/2)
22177772	12.48	Printed	010	CAPITAL ONE TRADE CREDIT (000972/3)
22177773	1,100.47	Printed	010	CARDMEMBER SERVICES (000322/2)
22177774	6,279.44	Printed	010	CENTER FOR THE COLLABORATIVE (000629/1)
22177775	364.67	Printed	010	COUNTY MOTOR PARTS (000111/3)
22177776	5,155.68	Printed	010	CURRICULUM ASSOCIATES (000116/2)
22177777	80.69	Printed	010	D LUPITAS RESTAURANT (000119/1)
22177778	446.04	Printed	010	DAVID and SONS TRUCK REPAIR IN (000120/1)
22177779	17.91	Printed	130	DEL SOL MARKET (000125/1)
22177780	19,736.65	Printed	010	DELL MARKETING LP (000126/1)
22177781	193.59	Printed	010	DEMCO (000607/2)
22177782	50.00	Printed	130	DOMINOS PIZZA (000142/1)
22177783	195.48	Printed	130	FBC OF HENDERSON LLC (000154/1)
22177784	158.99	Printed	010	FORENSIC DRUG TESTING (000162/1)
22177785	4,739.64	Printed	010	GIGA KOM (000179/2)
22177786	877.49	Printed	010	GraduationMail Ivy Robes (001030/1)
22177787	1,703.14	Printed	130	HOLLANDIA DAIRY, INC (000608/1)
22177788	3,375.00	Printed	010	HOLTVILLE UNIFIED FOOD SERVICE (000201/1)
22177789	794.00	Printed	010	HOLTVILLE UNIFIED SCHOOL DISTR (000202/1)
22177790	36.06	Printed	010	HOME DEPOT DEPT 32-2149095931 (000203/1)
22177791	30,613.15	Printed	010	IMPERIAL IRRIGATION DISTRICT (000221/1)
22177792	84.00	Printed	010	IMPERIAL VALLEY ROP (000232/1)
22177793	281.36	Printed	010	LA BRUCHERIE IRRIGATION SUPPLY (000260/1)
22177794	39.69	Printed	130	LUZ CHABOLLA (000495/1)
22177795	205.40	Printed	010	MADRIGAL, MARIANA (001028/1)
22177796	75.53	Printed	010	MCALPINE, LEIGH (000556/1)
22177797	417.68	Printed	010	Music & Arts (000489/2)
22177798	525.00	Printed	010	PADILLA JORGE F (000297/1)
22177799	1,500.00	Printed	010	Pyro Spectaculars, Inc (000887/1)
22177800	67.87	Printed	010	QUILL CORP (000318/1)
22177801	302.50	Printed	010	QUILL CORP (000318/1)
22177802	371.63	Printed	010	QUILL CORP (000318/1)
22177803	645.42	Printed	010	QUILL CORP (000318/1)

Selection Grouped by Sort/Group - Sorted by Sort, Check Number, Include Address? No, Checks Dated 05/19/2022, Filtered by (Bank Account(s) IN ("COUNTY"), Source = A, Pay To = N, Payment Method = C, Summary? = N, Sort/Group = 1, Further Sort by = N)

ESCAPE

ONLINE

Page 24 of 69

Register 000191 - 05/19/2022

Number Amount Status Fund Cancel Register (Date) Payee

Bank Account COUNTY - County, Register 000191, Dated 05/19/2022 (continued)

22177804	314.63	Printed	010		QUILL CORP (000318/1)
22177805	165.57	Printed	010		R S D (000320/1)
22177806	151.50	Printed	010		ROMANS WATER (000331/1)
22177807	410.00	Printed	010		SECURITAS SECURITY SERVICES SE (000355/1)
22177808	4,138.80	Printed	130		SHAMROCK FOODS COMPANY (000356/2)
22177809	4,346.47	Printed	130		SYSCO FOOD SERVICES OF SAN DIE (000384/1)
22177810	150.30	Printed	010		Tommys Screen Printing (000395/1)
22177811	912.50	Printed	130		VALLEY PRODUCE (000783/2)
22177812	910.40	Printed	010		WRIGHT, GINA (000591/2)

44 Totals for Register 000191

107,207.91 Number of Items

County Check Register

ReqPay94a

Org Summary

Holtville Unified School District	2217769 through	22177812	Total Count	44	\$107,207.91
Check #					

Register 000193 - 05/26/2022

Bank Account COUNTY - County

Number	Amount	Status	Fund	Cancel Register (Date)	Payee
--------	--------	--------	------	------------------------	-------

Bank Account COUNTY - County, Register 000193, Dated 05/26/2022

22178538	1,517.34	Printed	010		A T T (000008/1)
22178539	4,347.38	Printed	010		AMAZON CAPITAL SERVICES, INC (000822/1)
22178540	1,292.96	Printed	010		AUTO ZONE (000049/1)
22178541	450.00	Printed	010		BEACH AND SON TOWING (000985/1)
22178542	3,741.83	Printed	010		C R and R INCORPORATED (000070/1)
22178543	150.00	Printed	010		CALIBER SCREENING (000075/1)
22178544	259.14	Printed	010		CAPITAL ONE TRADE CREDIT (000972/3)
22178545	64.65	Printed	010		CARDMEMBER SERVICES (000322/2)
22178546	3,789.54	Printed	010		CITY OF HOLTVILLE (000102/1)
22178547	27.94	Printed	010		D LUPITAS RESTAURANT (000119/1)
22178548	94.02	Printed	130		DEL SOL MARKET (000125/1)
22178549	147.00	Printed	010		Department of Justice Accounting Office (000130/1)
22178550	292.28	Printed	130		DOMINOS PIZZA (000142/1)
22178551	490.43	Printed	010		GAS COMPANY (000172/1)
22178552	155.28	Printed	010		GEORGES PIZZA (000177/1)
22178553	11,520.70	Printed	010		GIGA KOM (000179/2)
22178554	1,440.70	Printed	130		HOLLANDIA DAIRY, INC (000608/1)
22178555	12,995.00	Printed	010		ICOE (000210/1)
22178556	1,987.79	Printed	010		IMPERIAL IRRIGATION DISTRICT (000221/1)
22178557	4,500.00	Printed	010		IMPERIAL VALLEY MSP PROGRAM (000228/1)
22178558	30.82	Printed	010		ORANGE COUNTY DEPARTMENT OF ED (000294/2)
22178559	521.47	Printed	010		QUILL CORP (000318/1)
22178560	522.53	Printed	010		QUILL CORP (000318/1)
22178561	1,077.32	Printed	010		R S/D (000320/1)
22178562	42.18	Printed	010		ROMANS WATER (000331/1)
22178563	6,840.09	Printed	130		SHAMROCK FOODS COMPANY (000356/2)
22178564	1,260.42	Printed	010		SHI SOFTWARE (000358/1)
22178565	125.65	Printed	010		Sprint Communication Company (000816/2)
22178566	3,800.45	Printed	130		SYSCO FOOD SERVICES OF SAN DIE (000384/1)
22178567	1,145.00	Printed	130		VALLEY PRODUCE (000783/2)
22178568	557.13	Printed	010		Verizon Wireless Services LLC (000422/1)
65,187.04					31 Totals for Register 000193

Org Summary

Holtville Unified School District

Check #

22178228 through

22178568 Total Count

32

\$72,906.99

Register 000192 - 05/26/2022

Bank Account COUNTY - County

Number	Amount - Status	Fund	Cancel Register (Date)	Payee
--------	-----------------	------	------------------------	-------

Bank Account COUNTY - County, Register 000192, Dated 05/26/2022

22178228	7,719.95 Printed	130		SHAMROCK FOODS COMPANY (000356/2)
----------	------------------	-----	--	-----------------------------------

7,719.95	Number of Items	1	Totals for Register 000192
----------	-----------------	---	----------------------------

Register 000194 06/02/2022

Number	Amount	Status	Fund	Cancel Register (Date)	Payee
Bank Account COUNTY - County, Register 000194, Dated 06/02/2022					
22179908	154.62	Printed	010		A T & T (000008/1)
22179909	248.75	Printed	010		ACOSTA, FERNANDO (000502/1)
22179910	5,634.47	Printed	010		AVILA, DAVID (000510/1)
22179911	446.90	Printed	010		Baja Desert Tire Co (000052/2)
22179912	14.61	Printed	010		CAPITAL ONE TRADE CREDIT (000972/3)
22179913	13,695.00	Printed	010		COLLEGE BOARD (000107/1)
22179914	31.98	Printed	130		DEL SOL MARKET (000125/1)
22179915	135.31	Printed	130		DOMINOS PIZZA (000142/1)
22179916	293.13	Printed	010		DUARTE, MAYRA (000518/1)
22179917	114.00	Printed	130		FBC OF HENDERSON LLC (000154/1)
22179918	252.15	Printed	010		HERRERA, SELENIA (000537/1)
22179919	1,836.65	Printed	130		HOLLANDIA DAIRY, INC (000608/1)
22179920	300.00	Printed	010		IMPERIAL COUNTY BEHAVIORAL (000216/1)
22179921	710.00	Printed	010		PADILLA JORGE F (000297/1)
22179922	209.29	Printed	010		ROMANS WATER (000331/1)
22179923	8,457.46	Printed	010		SAN DIEGO CO OFFICE OF EDUCATI (000334/1)
22179924	253.65	Printed	010		SERRANO LINDA (000572/2)
22179925	3,463.47	Printed	130		SHAMROCK FOODS COMPANY (000356/2)
22179926	5,651.21	Printed	130		SYSCO FOOD SERVICES OF SAN DIE (000384/1)
22179927	69.46	Printed	010		UPS (000409/1)
41,972.11		Number of Items	20	Totals for Register 000194	

County Check Register

ReqPay94a

Org Summary

Holtville Unified School District

Check #

22179908 through

22179927 Total Count

20

\$41,972.11

Register 000195 - 06/09/2022

Bank Account COUNTY - County

Payee

Cancel Register (Date)

Fund

Amount Status

Bank Account COUNTY - County, Register 000195, Dated 06/09/2022

Number	Amount	Status	Fund	Cancel Register (Date)	Payee
22180702	14,402.00	Printed	010		ALTA VISION, INC (000761/1)
22180703	171.87	Printed	010		AUTO ZONE (000049/1)
22180704	8,420.10	Printed	010		AVILA, DAVID (000510/1)
22180705	40.00	Printed	010		Baja Desert Tire Co (000052/2)
22180706	42.84	Printed	130		BERNARD FOOD INDUSTRIES INC (000058/1)
22180707	454.65	Printed	010		CALIBER SCREENING (000075/1)
22180708	647.53	Printed	010		COSTCO (000110/1)
22180709	142.44	Printed	010		COUNTY MOTOR PARTS (000111/3)
22180710	325.34	Printed	010		D LUPITAS RESTAURANT (000119/1)
22180711	375.22	Printed	010		DAVID and SONS TRUCK REPAIR IN (000120/1)
22180712	268.30	Printed	010		DUARTE, MAYRA (000518/1)
22180713	4,442.29	Printed	010		ENTERPRISE FM TRUST (000767/1)
22180714	45.60	Printed	130		FBC OF HENDERSON LLC (000154/1)
22180715	274.85	Printed	010		FRANCOS AUTO ELECTRICAL (000626/1)
22180716	3,264.00	Printed	010		Gary Cardiff Enterprise (000759/1)
22180717	43.74	Printed	010		GEORGES PIZZA (000177/1)
22180718	614.50	Printed	010		HARRISON, PATRICA (000523/1)
22180719	578.74	Printed	130		HOLLANDIA DAIRY, INC (000608/1)
22180720	600.00	Printed	010		HOLTVILLE UNIFIED FOOD SERVICE (000201/1)
22180721	6,500.00	Printed	010		IMPERIAL VALLEY MSP PROGRAM (000228/1)
22180722	91.54	Printed	010		IMPERIAL VALLEY RESOURCE MANAG (000231/1)
22180723	2,386.00	Printed	010		IRON ORNAMENTAL WORKS (001000/2)
22180724	173.63	Printed	010		JOHNSTON, MYKELL (000663/1)
22180725	459.35	Printed	010		LA BRUCHERIE IRRIGATION SUPPLY (000260/1)
22180726	2,028.25	Printed	010		LUIS RODRIGUEZ ROADTECH (000493/1)
22180727	149.95	Printed	010		Page, Marco (001029/1)
22180728	22.26	Printed	010		QUILL CORP (000318/1)
22180729	322.46	Printed	010		QUILL CORP (000318/1)
22180730	526.89	Printed	010		QUILL CORP (000318/1)
22180731	917.97	Printed	010		R S D (000320/1)
22180732	51.20	Printed	010		RAMIREZ, RAQUEL (000779/1)
22180733	927.50	Printed	010		ROTO ROOTER SEWER (000332/1)
22180734	271.15	Printed	010		SAN DIEGO CO OFFICE OF EDUCATI (000334/1)
22180735	2,044.00	Printed	010		SAN DIEGO ZOO EDUCATION DEPART (000339/1)
22180736	402.00	Printed	010		SCHOOL PATHWAYS LLC (000348/1)

Selection

Grouped by Sort/Group - Sorted by Sort, Check Number, Include Address? No, Checks Dated 06/09/2022, Filtered by (Source = A, Pay To = N, Payment Method = C, Summary? = N, Sort/Group = 1, Further Sort by = N)

ESCAPE

ONLINE

Page 27 of 74

030 - Holtville Unified School District

Generated for Carmen Mireles (CMIRELES), Jun 8 2022 2:52PM

Register 000195 - 06/09/2022

Bank Account COUNTY - County

Number	Amount	Status	Fund	Cancel Register (Date)	Payee
Bank Account COUNTY - County, Register 000195, Dated 06/09/2022 (continued)					
22180737	783.11	Printed	010		SCHOOL SPECIALTY (000351/3)
22180738	410.00	Printed	010		SECURITAS SECURITY SERVICES SE (000355/1)
22180739	2,187.03	Printed	130		SHAMROCK FOODS COMPANY (000356/2)
22180740	3,900.15	Printed	130		SYSCO FOOD SERVICES OF SAN DIE (000384/1)
22180741	320.00	Printed	010		Tom A Brady and Sons Inc (000394/1)
22180742	4,330.73	Printed	010		Tommys Screen Printing (000395/1)
22180743	139.64	Printed	010		Velazquez, Gerardo (000795/1)
22180744	1,648.97	Printed	010		Verizon Wireless Services LLC (000422/1)
66,147.79				43 Totals for Register 000195	

Org Summary

Holtville Unified School District

Check # 22180702 through

22180744 Total Count

43

\$66,147.79

Selection

Grouped by Sort/Group - Sorted by Sort, Check Number, Include Address? No, Checks Dated 06/09/2022, Filtered by (Source = A, Pay To = N, Payment Method = C, Summary? = N, Sort/Group = 1, Further Sort by = N)

ESCAPE

ONLINE

Page 29 of 74

HOLTVILLE UNIFIED SCHOOL DISTRICT
School Board Meeting Agenda

PERSONNEL

MEMORANDUM

TO: BOARD OF TRUSTEES
FROM: CELSO RUIZ, SUPERINTENDENT
SUBJECT: CERTIFICATED RESIGNATION
DATE: JUNE 13, 2022

The Board is requested to accept the following Certificated Resignation effective June 10, 2022:

1. Lauren Hoff	Teacher	HMS/HHS
----------------	---------	---------

MEMORANDUM

TO: BOARD OF TRUSTEES
FROM: CELSO RUIZ, SUPERINTENDENT
SUBJECT: CLASSIFIED RESIGNATION/RETIREMENT
DATE: JUNE 13, 2022

The Board is requested to accept the following Classified Resignation/Retirement:

A)

1. Ericka Pompa	Speech Language Assistant	District
2. Alicia Gutierrez	Cafeteria Worker II	District
3. Claudia Gutierrez (retiree)	Cook	District
4. Alam Reyes Torres	Paraprofessional	Pine
5. Vivian Gonzalez	Paraprofessional	Pine

MEMORANDUM

TO: BOARD OF TRUSTEES
FROM: CELSO RUIZ, SUPERINTENDENT
SUBJECT: CLASSIFIED EMPLOYMENT FOR 2021/22
DATE: JUNE 13, 2022

The Board is requested to approve the following Classified Employment:

- | | | | |
|----|--------------------|------------------|----------|
| 1. | Nazarie Robinson | Paraprofessional | Finley |
| 2. | Alexander Martinez | 5.75 to 8 hour | District |

MEMORANDUM

TO: BOARD OF TRUSTEES
FROM: CELSO RUIZ, SUPERINTENDENT
SUBJECT: CLASSIFIED PATERNITY LEAVE
DATE: JUNE 13, 2022

The Board is requested to accept the following Classified Paternity Leave:

1) Mario Lemus	Bus Driver	2 weeks
----------------	------------	---------

MEMORANDUM

TO: BOARD OF TRUSTEES
FROM: CELSO RUIZ, SUPERINTENDENT
SUBJECT: SUMMER SCHOOL EMPLOYMENT
DATE: JUNE 13, 2022

The Board is requested to accept the following Summer School Employment for the 2021/22 school year:

1. Sandra Duran	TK teacher	Finley
2. Lala Hayden	CBK teacher	Finley
3. Nicole Tumbaga	Kinder teacher	Finley
4. Cecilia Rodriguez	1 st teacher	Finley
5. Chelsea Garcia	2 nd teacher	Finley
6. Mariana Madrigal	3 rd teacher	Finley
7. Annette Carranza	4 th teacher	Finley
8. Karina Renteria	5 th teacher	Finley
9. Jose Villapudua	6 th teacher	Finley
10. Valerie Cornejo	TK teacher/paraprofessional	Finley
11. Julia Meza	Paraprofessional	Finley
12. Liliana Aragon	CBK teacher/paraprofessional	Finley
13. Esperanza Velazquez	Kinder teacher/paraprofessional	Finley
14. Daniela Jimenez	Paraprofessional	Finley
15. Victoria Arvizu	Paraprofessional	Finley
16. Tonya Hawk	Paraprofessional	Finley
17. Aime Carrillo	Paraprofessional	Finley
18. Blaise Cazares	Paraprofessional	Finley
19. Fausto Ramirez	Paraprofessional	Finley
20. Marco Page	Principal	Finley
21. Blanca Mendez	Secretary	Finley
22. Marely Garcia	Substitute	Finley
23. Gabriela Medina	Substitute	Finley
24. Samantha Williams	K-1 st teacher	Migrant
25. Annabel Lyerly	2 nd teacher	Migrant
26. Nayeli Garcia	3 rd teacher	Migrant
27. Crystal Arias	4 th teacher	Migrant
28. Marci Mange	5 th teacher	Migrant
29. Diana Reyes	6 th teacher	Migrant
30. Katy Knapp	7 th teacher	Migrant
31. Lee Quarcelino	8 th teacher	Migrant
32. Vivian Gonzalez	Paraprofessional	Migrant

33. Danielle Mauldin	Paraprofessional	Migrant
34. Melissa Palacios	Paraprofessional	Migrant
35. Kelsey Chabolla	Paraprofessional	Migrant
36. Pat Harrison	Principal	Migrant
37. Nadia Pizano	Secretary	Migrant
38. Maria Lopez	Counselor	Migrant
39. Luis Chairez	ELA teacher	HHS
40. Robert Moedano	Math teacher	HHS
41. Bonnie Sorenson	Science teacher	HHS
42. Carson Cronkright	Ag Mechanics teacher	HMS
43. Ethan Ming	Patient Care teacher	HMS
44. Pompeyo Tabarez	Public Safety	HMS
45. Gabriel Ponce	Business Management	HMS
46. David Avila	Math	HMS
47. Anthony Arevalo	Principal	HHS
48. Karolina Lopez	Secretary	HHS
49. Joe Escalera	Teacher	Sam Webb
50. Fernanda Ledezma	Counselor	Adult Ed
51. Eric Velazquez	Principal/LCAP	HMS
52. Marla Ponce	Secretary	HMS
53. Mitch Drye	Principal	Sam Webb

HOLTVILLE UNIFIED SCHOOL DISTRICT
School Board Meeting Agenda

GENERAL BUSINESS



621 E. Sixth Street, Holtville, Ca. 92250
(760) 356-2974 (760) 356-4936 fax
www.holtville.k12.ca.us

**Holtville Unified School District
Regular Board Meeting Schedule for 2021/22
621 E. Sixth Street (Board Room)
Holtville, Ca. 92250
Closed Session 5:00 p.m.
Open Session 6:00 p.m.**

Monday, July 18, 2022

Monday, August 15, 2022

*** Monday, September 12, 2022**

Monday, October 17, 2022

Monday, November 14, 2022

*** Monday, December 12, 2022**

Tuesday, January 17, 2023

Tuesday, February 21, 2023

*** Monday, March 13, 2023**

Monday, April 17, 2023

Monday, May 15, 2023

Monday, June 12, 2023

*** Monday, June 19, 2023**

*** Thursday, June 22, 2023 (Special Board Meeting, If Needed)**

*** Denotes change from normal third Monday of the month for budget submission purposes.**

Memorandum of Understanding

Between the Holtville School District and the School Librarian Regarding Services for the 2022-2023 School Year

This Memorandum of Understanding establishes an Agreement between the Holtville Union School District (District) and Sarah Garcia (Librarian) and for the Librarian to provide services during the 2022-23 school year based on a transitory need by the District. The District's Superintendent will be the point of contact for the District's obligation under this MOU.

The terms of this Agreement are as follows:

1. Librarian Obligations:

- a. Provide 1 visit of service per month. This can be via zoom, in-person, or group meetings. Additional visits may be scheduled as needed.
- b. Plan and conduct a course of instruction for classified personnel assigned to the library. Staff development may include:
 - Planning and coordinating school library programs with the instructional programs of the school district.
 - Selecting materials for school and district libraries.
 - Reviewing all library purchases and approving before sending to purchasing departments.
 - Coordinating or supervising library programs at the school site or district level.
 - Supervising classified personnel assigned to school library duties.
 - Developing procedures for management of the school library site and district libraries.

2. District's Obligations:

- a. Compensation:
 - a. The District shall compensate the Librarian in the amount of **\$416 per month** for the 2022-23 School Year
 - b. The District shall cooperate and collaborate with the Librarian to assure that she can effectively perform the duties required by this MOU.
 - c. The District shall notify the Librarian no later than January 1, 2023 if any changes in library services are anticipated beyond the terms of this agreement.

3. Effective Date and Term of Agreement

This Agreement shall commence on the later of the date the Agreement is signed by all parties and shall remain in full force and effect until June 30, 2023.

4. Insurance: Consultants are not eligible for health insurance or other fringe benefits.

5. Independent Contractor

a. The Librarian, in the performance of this Agreement, shall be and act as a library consultant. The Librarian understands and agrees that she shall be considered an employee of the District but is not entitled to benefits of any kind or nature normally provided to employees of the District and/or to which the District's employees are normally entitled, including, but not limited to, State Unemployment Compensation or Workers' Compensation. The Librarian shall assume full responsibility for payment of federal, state, and local taxes, including unemployment insurance, social security, and income taxes.

b. Except as otherwise set out in this Agreement, the Librarian shall determine the means and methods for carrying out the work to achieve the result required by District. The Librarian shall determine the hours during which the services shall be performed and the sequence of tasks, subject to the reasonable business needs of the District.

c. Nothing in this Agreement shall prohibit the Librarian from taking on other jobs or performing services for other entities, so long as she can perform the work necessary to carry out this Agreement.

6. Termination:

a. In the event that the Librarian fails to perform on a material term of this Agreement, the District has the right to terminate the Agreement upon seven days written notice and all other rights and remedies available to it at law and equity.

b. In the event that the District fails to perform on the material term of this Agreement, the Librarian shall have the right to terminate the Agreement upon seven days written notice.

The Parties' representatives shall be:

Librarian:

Sarah Garcia
1210 Drew Road
El Centro, CA 93343

Phone: 760-562-7281

Email: skgarcia2004@yahoo.com

Holtville Union School District

Celso Ruiz, Superintendent
621 East Sixth Street
Holtville, CA 92250

Phone: 760-356-2974

Email: celso@holtville.k12.ca.us

IN WITNESS WHEREOF, the parties have executed this Agreement as of the date hereof.

For the Librarian:

By: *Sarah Garcia*

Sarah Garcia

School Librarian

Date: May 31, 2022

For Holtville School District:

By: _____

Celso Ruiz, Superintendent

Holtville School District

Date: _____

HOLTVILLE UNIFIED SCHOOL DISTRICT
School Board Meeting Agenda

PUBLIC HEARING

Holtville Unified School District

PUBLIC HEARING ANNOUNCEMENT

The community and general public are invited to attend a public hearing regarding the Local Continuity and Accountability Plan (LCAP)

The meeting will take place on Monday, June 13, 2022 at the Holtville Unified School District Board, located on 621 E. Sixth Street, Holtville, Ca. 92250. The meeting will begin at 6:00 p.m.

Ann Heraz, HUSD Administrative Assistant

Posted on May 30, 2022
HUSD Administration Office
Holtville High School
Holtville Middle School

HOLTVILLE UNIFIED SCHOOL DISTRICT

School Board Meeting Agenda

ACTION/DISCUSSION

**HOLTVILLE UNIFIED SCHOOL DISTRICT'S PROPOSAL FOR A
SIDE LETTER OF AGREEMENT**

**BETWEEN THE HOLTVILLE UNIFIED SCHOOL DISTRICT AND
THE HOLTVILLE TEACHERS ASSOCIATION**

**REGARDING THE IMPACTS & EFFECTS OF AB 130 & THE
COVID-19 PUBLIC HEALTH EMERGENCY**

May 19, 2022

This Side Letter of Agreement (hereinafter "Agreement") is entered into by and between the Holtville Unified School District (hereinafter "District") and the Holtville Teachers Association (hereinafter "Association") regarding the impacts and effects of Assembly Bill 130 and the changes to independent study and the COVID-19 public health emergency.

1. Independent Study

- A. The parties recognize that the District is required to provide an independent study option pursuant to AB 130, and that it will do so consistent with all of the requirements set forth in Education Code sections 51745 - 51749.6. The parties recognize and agree that independent study content shall be aligned to grade level standards that is provided at a level of quality and intellectual challenge substantially equivalent to in-person instruction, and that for high schools, this shall include access to all courses offered by the local educational agency for graduation and approved by the University of California or the California State University as creditable under the A–G admissions criteria. The District will determine the kinds and levels of services to be provided and the methods and means of providing them.
- B. To account for the changes to the provision of Independent Study, the District will issue a one-time, only stipend in the amount of one thousand dollars (\$1,000) to any full time (1.0 FTE) unit member who provides instruction, support, and/or related services to students during the 2021-2022 school year, subject to the following terms and conditions:
 - i. To be eligible for this stipend, unit members must be employed on the date this Agreement is ratified by the Governing Board.
 - ii. Unit members on leave or who were not employed for more than twenty-five percent (25%) of the 2021-2022 school year are not eligible for this stipend.
 - iii. Stipends pursuant to this paragraph shall be prorated for unit members assigned less than 1.0 FTE, subject to applicable payroll taxes and deductions, and shall be issued within forty-five (45) days of ratification of this Agreement.

2. Safety

- A. The District will monitor and consider guidance issued by the county and state health authorities to stay current with expert advice regarding the prevention of COVID-19.
- B. The District and unit members will follow the operative State and County Health Officer order(s) as they apply to public schools.

3. Leaves

Unit members shall have the ability to use leave consistent with the law. The District shall provide supplemental paid sick leave to unit members consistent with its obligations pursuant to Government Code section 248.6 COVID-19 2022 supplemental paid sick leave (2022 SPSL).

4. Miscellaneous

- A. All components of the current Collective Bargaining Agreement between the District and the Association not addressed by the terms of this Agreement shall remain in full effect.
- B. The terms of this Agreement shall expire June 30, 2022.
- C. This Agreement is not effective until ratified by the Association and the Governing Board of the District.

This Agreement is not precedent setting. This Agreement resolves any and all negotiable effects of AB 130 and the COVID-19 public health emergency. The District and Association reserve the right to negotiate any impacts and effects in the 2021-2022 school year unrelated to AB 130 and the COVID-19 public health emergency.


For the Association

6/9/2022
Dated


For the District

June 9, 2022
Dated

Ratified by the Governing Board on _____



Creative Bus Sales

Creative Bus Sales
14740 Ramona Ave
Chino, CA 91710

Phone: 909.465.5528
Fax: 909.465.5529
www.creativebussales.com

Buyer's Order Contract

Date:	June 8, 2022	Unit #(s):	TBD
Customer Name:	Holtville Unified School District		
Contact:	Martha Salazar	Phone:	760-356-2658
Address:	621 E Sixth St	Fax:	
City, State, Zip:	Holtville, CA 92250	E-Mail:	msalazar@husd.net
Sys2K Entity #:		Salesperson:	Mauro Bologna
Ship To Address:	Attn: Martha Salazar - Holtville Unified School District - 621 E Sixth St		
Ship To Address Cont'd:	Holtville, CA 92250		
Ship To Phone:	760-356-2658	Ship To Email:	msalazar@husd.net
Finance Source:		Contact:	
Address:		Phone:	
City, State, Zip:		Fax:	
Description of Vehicle:	IC Bus model CE School Bus. Piggyback bid # 2122-SC11-01 (C).		
VIN #:	TBD		
Engine Type:	Diesel	FOB Terms:	Shipping
Number of Passengers:	76	Wheelchair Positions:	None
Estimated Delivery Date:	180 days after PO	Payment Terms:	Net 30
		Unit Price	\$ 164,140.00
		Delivery	\$ -
Possession State:	CA	Incentive (Non-Taxable)	\$ -
		Rebates (Taxable)	\$ -
		Doc Prep Fee (Taxable)	\$ 85.00
		Base Selling Price	\$ 164,225.00
		ADA Amount (Non Taxable)	\$ -
		Total Taxable Amount	\$ 164,225.00
		Sales Tax	\$ 12,727.44
7.750%	CA - Holtville		\$ -
Notes:			\$ -
Sales tax is calculated based on the state or country in which customer takes possession of vehicle. Sales tax will be charged to customers taking possession in AZ, CA, CO, FL, IN, NM, NV, OK, OR, SC, TX, WA, Canada, and Mexico.			\$ -
All rebates and incentives will be signed over to Creative Bus Sales		DMV Estimated Fees	\$ -
California State Tire Fee of \$1.75 per tire applies to all new vehicle purchase or leases.		DMV Electronic Filing Fee	\$ 30.00
		Tire Fee	\$ 10.50
		Fees Sub-Total	\$ 40.50
		Total Price Per Unit	\$ 176,992.94
		Quantity	1
		Contract Total	\$ 176,992.94
		0.00	
		Customer Net Trade	\$ -
		Customer Deposit	\$ -
			\$ -
		Balance Due	\$ 176,992.94

Remit To: Creative Bus Sales, Inc. 14740 Ramona Ave, Chino CA 91710

Terms: The deposit if indicated above is due with this signed contract. The balance due indicated above is due before vehicle(s) will be released to the Customer. If the vehicle(s) is not accepted by the Customer, the vehicle will be available for sale to other customers. The vehicle(s) will not be titled to the Customer until the contract total indicated above plus any interest charges indicated herein are paid in full. There is no "cooling off" or other cancellation period for vehicle sales. Therefore, you cannot later cancel this contract without the agreement of the Dealership, or for legal cause. The tax and fees reflected on this agreement are based on the regulations applicable at the time of drafting this contract. The actual amounts due will be based on the regulations applicable at the time title for each vehicle transfer.

Buyer's Signature: _____

Creative Bus Sales:

Mauro Bologna

6/8/2022

CBS Signature: _____



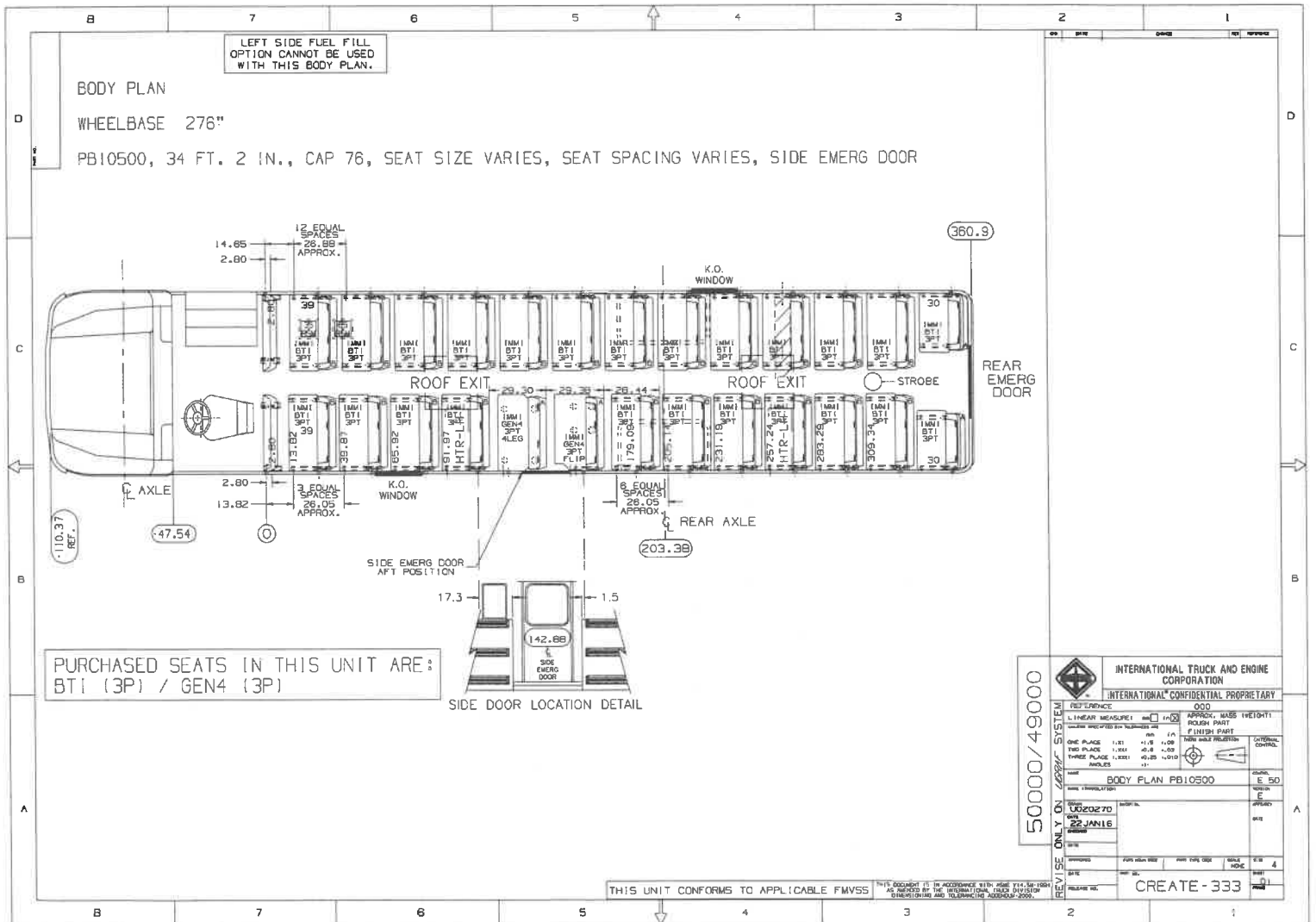
Creative Bus Sales

Quote for purchase IC CE School Bus

Capacity: Up to 76

June 8, 2022

		Bid Option Reference #	Per Bus	1 Buses
Line	Price Calculations			
	South County Support Services Agency Bid #2122-SC11-01-C	bid price	\$141,500.00	
	<i>Additional Approved Options...</i>			
1	Change to Cummins ISB 6.7L Diesel with 240 or greater HP	10	\$6,075.00	
2	Increase wheelbase to 276"	16	\$6,600.00	
3	Increase capacity of axles/suspension/GVWR	27	\$3,050.00	
4	Add exhaust brake	34	\$250.00	
5	Add Seat (thirteen @ \$550 each)	49	\$7,700.00	
6	Exterior luggage compartments (two @ \$1050 each)	56	\$2,100.00	
7	Increase fuel tank size (100 Gallon)	60	\$950.00	
8	Remove wheelchair lift door, lights, buzzer and interlocks	70	(\$1,800.00)	
9	Remove wheelchair lift, pad and fire extinguisher	71	(\$2,800.00)	
10	Remove wheelchair station (three @ \$950 each)	72	(\$2,850.00)	
11	Change to 11r tire size (Quantity six)	84	\$700.00	
12	Remove specified AC system	86	(\$7,500.00)	
13	180,000 btu AC system (rooftop condenser and fully ducted)	89	\$20,250.00	
	<i>CBS Dealer Discount...</i>		(\$10,000.00)	
	Sub-total		\$164,225.00	\$164,225.00
	Add sales tax	7.75%	\$12,727.44	\$12,727.44
	Total		\$176,952.44	\$176,952.44
	DMV Fee		\$30.00	\$30.00
	CA Tire Fee		\$10.50	\$10.50
	Invoice Amount		\$176,992.94	\$176,992.94
	Delivery Date		180 days after PO	180 days after PO
	Municipal lease option with \$1 buyout: (Formal quote will be emailed separately)		\$176,992.94	\$176,992.94
	Three Year Option (annual payments) 4.19%		\$61,434.25	\$61,434.25
	Five Year Option (annual payments) 4.28%		\$38,425.17	\$38,425.17
	Seven Year Option (annual payments) 4.34%		\$28,619.76	\$28,619.76



CE SERIES



IC BUS®
CE SERIES





UPTIME, ON TIME, EVERY TIME

WE ARE FOCUSED ON MAKING PRODUCTS THAT ARE BETTER AND DIFFERENT. INVESTING IN QUALITY, AND BUILDING A SCHOOL BUS THAT DRIVERS LOVE TO DRIVE.

Parents, teachers and school boards all depend on our buses to reach their destination with iron-clad predictability. Our success in doing so is the result of listening to our customers and providing solutions. It's a partnership built on trust and a deep respect for the heady mission of transporting the most precious cargo on earth.





At IC Bus, we're proud of our legacy of building the highest quality buses on the market. That's why we make sure that every part we engineer and every material we choose must stand up to the rigors of daily use. Because when the school bell rings, your buses need to be on the road, not the service bay.

QUALITY

Millions of dollars invested into the Tulsa manufacturing facility to enhance precision assembly. Standard 16-gauge steel body and all-steel sub rail construction provide increased strength. Threaded steel body frame construction interlocks roof bows, drip rail and roof stringers into a simple single frame unit. Redesigned the side window design based on feedback from the field. Window is now easier to close and incorporates advanced water management features. Traditional hand-drive rivet construction is based on 120% of FMVSS design strength requirements.



DURABILITY

Wrap-around 12" rear bumper with through-the-bumper exhaust is bolted onto frame for added strength and easier repair. All external electrical connectors are sealed and locked for longevity. Rear and side emergency doors equipped with internal hidden hinges are not exposed to the elements, helping to prevent corrosion and flexing. Naviflex stepwell improves corrosion resistance. 13,500 - 21,000-lbs vari-rate spring capacity suspension (Rear Air Suspension available).



SERVICEABILITY

Best-in-class engine accessibility to access components such as the EGR cooler, rocker arm cover, air compressor, fuel system, exhaust manifold and turbo. Best-in-class location of the fuel and water separator, as well as the transmission fluid fill and drain access. Exterior electrical control panel improves accessibility to the electrical system for troubleshooting and after-market installations. Programmable oil change light gives fleets the ability to customize parameters, including number of miles/kilometers run, hours of operation or gallons of fuel. LCD on-board diagnostic display reports fault codes for engine and chassis without the need for a reader. 3-piece flat roped-in windshield and roped-in stationary glass for easier and more cost-effective glass replacement. CE Series features headlights that can be replaced without tools. Wide-opening, easy-tilt three-piece fiberglass hood provides excellent engine access for routine maintenance.



SAFETY BEYOND REPROACH

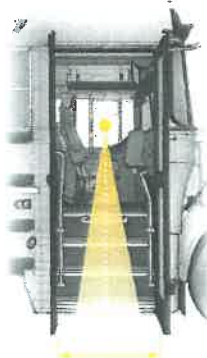
IC Bus takes a comprehensive approach to the safety of our products. This approach has led us to develop innovative features that protect children, like the integrated front bumper crossing control gate, available Leave No Student Behind® system, steering-wheel-mounted door switches and the widest stepwell in the industry. In fact, the stepwell is positioned to be better aligned with the driver's field of view versus the competitors, which reduces neck strain and fatigue.

CE SERIES SAFETY FEATURES

- Best-in-class 35" stepwell is better aligned with the driver's field of view versus the competitors and does not taper toward the top for easier and safer loading and unloading
- Long grab handles extend close to the ground and are reachable by even the smallest passengers
- Interchangeable SafeGuard BTI Seating integrated front bumper crossing control gate helps to ensure that students do not cross in front of the bus
- Available Leave No Student Behind® feature ensures driver's audible alarm at rear of bus before exiting, ensuring no student is overlooked
- Available automatic traction control helps the driver maintain control on slick roads
- Bendix® ESP® stability system may help mitigate rollovers and loss of control on a wide variety of road conditions. Full stability systems like this one deliver more performance than roll-over systems, thanks to additional sensors and braking capabilities.



Interchangeable SafeGuard BTI seating exclusively for IC Bus vehicles is continually reengineered to make sure it meets and exceeds all federal safety standards.



35" OPENING
ALIGNED WITH THE DRIVER'S
FIELD OF VIEW



IC BUS FULL VIEW CAMERA TECHNOLOGY™ BY ROSCO

IC Bus is proud to offer the industry's first camera system designed specifically for school buses. Combined with the side mirrors, this advanced system will allow bus drivers to have a "full view" around the bus so they can concentrate on driving and keeping kids safe.

FULL VIEW CAMERA FEATURES

Co-developed with Rosco, IC Bus designed the industry's first purpose-built camera for a school bus application.

Provides drivers views based on the situation at hand, such as backing up, opening the door, or a view to the side or front of the bus.

This purpose-built camera technology is designed to not overload the driver with too much information, but instead provide them with the right information at the right time.

Gives the driver a greater feeling of security and peace-of-mind with the combination of the full view camera technology and driver mirrors.

Provides accurate visibility to the areas that matter most around the bus.



The Full View Camera System displays the most appropriate view based on the situation at hand, including backing up, opening the door, or the view of the front, side or rear of the bus.

AUGMENTS EXISTING SAFETY FEATURES
AVOIDS INFORMATION OVERLOAD WITH A FOCUSED INTUITIVE APPROACH



Camera System Locations



IC Bus® is proud to be the first in the industry to offer Collision Mitigation (CM) technology and Electronic Stability Control (ESC) as standard equipment. In fact, the CE Series is available with the most powerful driver assistance system currently available for the commercial vehicle industry. The system integrates various sensors and brakes into a comprehensive safety suite to help drivers mitigate collisions, rollovers and loss-of-control situations — potentially resulting in lower repair costs and greater peace of mind.

BENEFITS OF ELECTRONIC STABILITY CONTROL

- Provides More Control on Slippery Surfaces
 - ESC will automatically apply the appropriate brakes when loss of traction is detected
 - Acts in ways the driver cannot replicate using selective wheel brake control
 - May act before the driver realizes a situation exists
- Actively Helps the Driver Avoid or Recover from Rollover and/or Loss of Control Conditions
 - ESC will help correct the vehicle orientation by reducing speed and/or applying brake pressure to the appropriate wheels
- More Control
 - The system helps mitigate vehicle slides, skids, and loss of control through advanced monitoring of a variety of vehicle parameters and automatic and selective application of vehicle brakes

THE IMPORTANCE OF FULL STABILITY

ELECTRONIC STABILITY CONTROL (ESC)

ESC is a key component of this active safety system. Using sensors combined with the Anti-lock Braking System (ABS), ESC helps the driver maintain control during over-steer and under-steer situations on both wet and dry road surfaces reducing the chance of a roll-over. When the stability threshold reaches a critical level, the system can selectively apply vehicle brakes and even de-throttle the engine.

DRIVING SCENARIO:

The vehicle's speed around a curve has exceeded the ability of the tires to hold the vehicle orientation, causing the vehicle to slide and over-steer.



SYSTEM RESPONSE:

ESC helps to correct the vehicle orientation by reducing speed and, if required, the system quickly applies braking pressure to the appropriate wheels.



DRIVING SCENARIO:

A vehicle enters a curve too fast on high friction pavement. The wheels and the pavement create a "tunnel" effect allowing the forces at the center of gravity to push the vehicle over.



SYSTEM RESPONSE:

ESC applies pressure to all brakes and reduces engine throttle to quickly reduce vehicle speed and help reduce the chance of a rollover.



The table below identifies the key features and components of the Electronic Stability Control system:

	Key Features	Key Components
Sensor Array	Wheel Speed Sensors	Allows the system to determine vehicle speed and monitor wheel lock-up to optimize braking
	Lateral Acceleration Sensor	Side or lateral forces are used to detect a roll situation
	Steering Angle Sensor	An early indicator of a potential critical maneuver. Helps the system to respond faster and more accurately
	Brake Pressure Sensors	Allows the system to accurately supplement the driver throughout the maneuver
	Yaw Rate Sensor	Allows the system to monitor the true orientation of the vehicle and compare it to the driver's intention
Performance Engineering	Multi-level Sensing	Improves the reaction time and accuracy of the intervention
	Tuning	Improves the ability of the stability system to match the tolerances of the situation
	All-Axis Braking	Provides the best opportunity to reduce vehicle speed in the shortest time
	Individual Corner Braking	Provides the capability to control under- and over-steer situations



COLLISION MITIGATION FOR ALL KEEPING AN EYE ON THE ROAD AHEAD

IC Bus is the only OEM to offer both active and passive collision mitigation features as standard equipment to help the driver maintain a safe travel experience. Passive safety provides alerts that may require the driver to take action. Active safety automatically takes action to help avoid or reduce the severity of a potential collision, such as de-throttling the engine and applying the brakes.

One of the most advanced active safety features included on the CE Series is enhanced Collision Mitigation. This system uses radar and an optional video camera to scan the forward path of the bus. If a slower moving or stopped vehicle is detected, the system is designed to reduce the severity and likelihood of a rear-end impact by applying the brakes.

This integration of various technologies creates a highly detailed data picture which can significantly reduce the chance of a false alert or activation.



The CE Series can use the radar and a camera to detect objects about 500 feet in front of the bus.

SYSTEM FEATURES

Feature	Description
Stationary Vehicle Braking	Provides alert and braking when system definitively identifies stationary car in lane
Stationary Object Alert	Helps reduce the likelihood of hitting a stationary object
Collision Mitigation	Helps reduce the frequency and severity of rear-end collisions
Adaptive Cruise Control	Helps driver maintain gap with forward vehicle
Following Distance Alerts	Helps reinforce a safer distance gap between host & forward vehicle
Over-speed Alert & Action	Warns driver when speeding
Lane Departure Warning	Alerts the driver to unintended lane change - helps drowsy drivers
Alert Prioritization	Provides most critical alert first helping mitigate driver distraction from multiple alerts occurring simultaneously
Impact Alerts	Helps warn the driver that a collision with a forward vehicle is possible



SUPPORTING SAFE DRIVING

FOLLOWING DISTANCE ALERTS

The radar can also be used to maintain a safe following distance when the Adaptive Cruise Control is engaged. Radar has many advantages including the ability to read objects through all weather conditions such as rain, snow, smoke and fog.

LANE DEPARTURE WARNING (available with camera)

The camera can detect if the bus unintentionally departs the lane without the turn signal activated and will sound an alarm and provide a visual alert. This is particularly valuable during driver distraction or drowsiness situations.



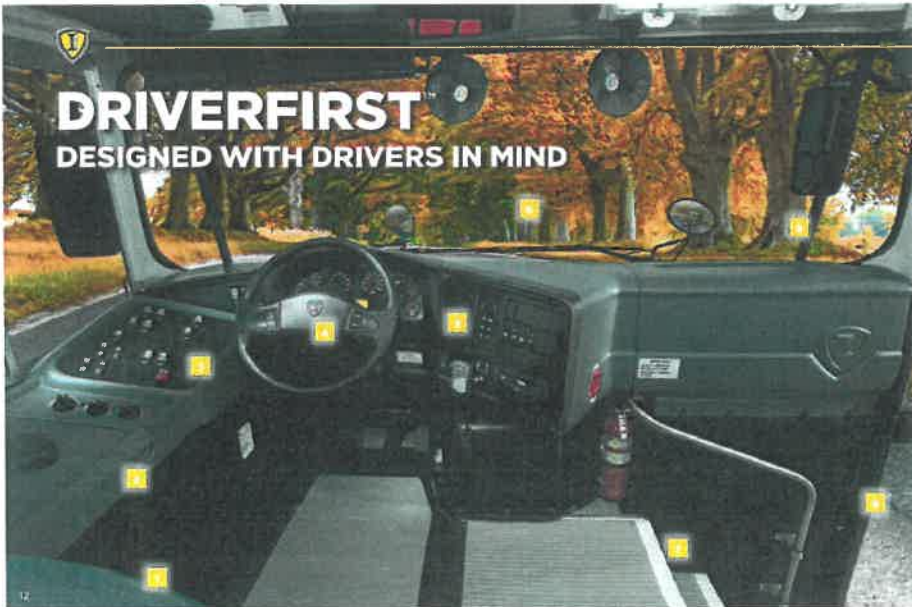
When an unintended lane departure is detected, an alert will sound.

OPTIONAL EXAMPLES

Feature	Description
Rear End Collisions	Can reduce the likelihood or severity of rear-end accidents
Overly Aggressive Drivers	Following Distance Alert will beep when following too closely
Limited Sight in Poor Weather Conditions	Radar can see through most bad weather to alert the driver if needed
Excessive Speed	Optional camera can recognize posted speed limits and alert the driver at +5 mph, +10 mph alert and 1.0 second engine debriefs will occur

The CE Series integrates radar, camera and the vehicle's brakes, to help provide enhanced safety for today's North American commercial vehicles.





DRIVERFIRST™ DESIGNED WITH DRIVERS IN MIND

- 1 Driver Seat Options**
IC Bus offers a full range of driver seat options, from base to premium.
- 2 Accessible Storage**
Easy-to-reach storage compartment next to driver's seat helps the driver reduce clutter.
- 3 Left Hand Switch Panel**
Switch panel is located in front of the driver and allows the driver to maintain a forward-facing position ensuring safe operation.
- 4 Standard Steering Wheel Controls (back fit)**
Allows driver to keep their eyes on the road and hands on the wheel.
- 5 Optimum Ergonomics**
Cockpit accounts for the measurements of over 1,500 real school bus drivers to ensure optimal ergonomics and reduced driver fatigue.
- 6 No Windshield Center Post**
No center post to obstruct forward visibility.
- 7 Widest Door in the Industry**
The CE Series door is the largest among three major competitors for ease of loading and unloading.
- 8 3-Piece Windshield**
Absence of A-Pillar provides a clear view of the side mirrors.
- 9 Ingress/Egress**
Steps are consistently spaced and better aligned with the driver's field-of-view enhancing safety.

MISSION STATEMENT

As a leader in the bus industry, IC continues that tradition of safety, reliability, and efficiency. We are committed to providing the most advanced, safe, and efficient school bus available today. We are committed to providing the most advanced, safe, and efficient school bus available today. We are committed to providing the most advanced, safe, and efficient school bus available today.





TAKE COMMAND

DRIVING AS MANY AS 78 CHILDREN TO AND FROM SCHOOL TAKES A DEFT TOUCH AND A LOT OF CONCENTRATION.

The driver's cockpit of the CE Series has been carefully designed using the measurements of over 1,500 actual bus drivers to ensure maximum comfort, reducing driver fatigue.

EASY-REACH DESIGN

Driver cockpit accounts for actual measurements of over 1,500 real school bus drivers to ensure optimum ergonomics and maximum comfort — reducing driver fatigue.

Electrically activated entrance door to increase driver control during loading and unloading with standard vandal lock on electric door.

8 lamp and entrance door switches placed on the steering wheel allow the driver to keep his/her hands on the wheel during loading/unloading situations.



OVER 1,500 DRIVERS

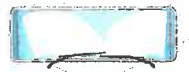
VISIBILITY - A NO COMPROMISE APPROACH

Maintaining a high level of visibility of the road and pedestrians is one of the most important factors in bus design. The CE Series includes many features designed to enhance visibility and put the driver in a position to succeed.

Flat glass ensures no distortion in the corners. Overlapping wiper pattern to ensure right hand mirror remains visible through cleared portion of windshield.

A greater percentage of the windshield is cleared than main competitors. Unlike some competitive designs, the CE Series does not have an A-pillar that may interfere with the driver's view of the mirrors.

The CE Series features a 3-piece windshield with individually replaceable sections to help avoid replacing an entire windshield in the event of damage. The windshield is also larger than the Bluebird, but not unnecessarily large like the Thomas design with much of the glass area extending above, and out of the driver's line of sight.



CE SERIES VISIBILITY

Windshield Design	3-piece
Windshield Area (sq. in.)	2,458.0
Wiper Coverage (sq. in.)	1,369.0
Wiper Efficiency (%)	56%
Side Glass (sq. in.)	1,144
Rear Glass (sq. in.)	696.0
Total Glass (sq. in.)	22,082.5

UNLIKE SOME COMPETITIVE DESIGNS, THE CE SERIES DOES NOT HAVE AN A-PILLAR THAT MAY INTERFERE WITH THE DRIVER'S VIEW OF THE MIRRORS





WE'VE GIVEN YOU THE STRENGTH TO DEPEND ON THE POWER OF CHOICE. THIS IS EVIDENCED BY OUR ENGINE OFFERINGS FROM REPUTABLE PARTNERS LIKE CUMMINS AND PSI, PLUS TRANSMISSIONS FROM EATON AND ALLISON.

We've also given the CE Series best-in-class engine access with easy-to-see fluid compartments—all to keep you headed down the road.

THE POWER OF CHOICE

Every bus driver knows that no two trips are the same. Having a reliable and powerful engine to get them through the day is one thing they should count on. CE Series offers three strong options: the PSI 8.8L Propane, the PSI 8.8L Gasoline and the Cummins® B6.7. No matter which engine suits your needs, you can be sure that rock-solid durability comes standard.



PROANE TANK CAPACITIES:
46-GALLON
68-GALLON
90-GALLON



DIESEL

Reliable and efficient Cummins® B6.7
200-260 hp and 520-660 lb.-ft.
VGT Turbocharger increases fuel economy
and braking horsepower



GASOLINE

Purpose-built for school bus applications
Low engine-speed design produces less noise,
heat and wear for more durability
Best-in-class accessibility for easy maintenance



PROPANE

Purpose-built design provides diesel-like performance
with low emissions
Smooth, quiet, reliable power
Propane tank sizes (gallons): 46, 68, 90



ELECTRIC

Zero emissions and lower cost of ownership
Range will exceed 120 miles
Estimated launch: 2019



PSI 8.8L

PURPOSE-BUILT FOR THE SCHOOL BUS INDUSTRY, PSI'S MEDIUM-DUTY 8.8L NATURALLY ASPIRATED ENGINE IS AVAILABLE WITH A GASOLINE OR PROPANE POWER UNIT DEVELOPED FROM THE BLOCK UP TO BE RELIABLE AND DURABLE.



CYLINDER HEADS
Modernized, heavy-duty, high-flow heads create fast burn to improve efficiency and reduce emissions



CRANKSHAFT
Forged and induction-hardened steel crankshaft creates durable block capable of 1,000+ lb.-ft. of torque



INTAKE MANIFOLD
Tuned long-runner provides higher torque and special air pump design keeps engine air cooler for improved efficiency

265-270 HP | 548-565 LB-FT



HEAVY-DUTY DESIGN

- Forged, induction-hardened crankshaft
- Forged rods and pistons
- Oil bath lubrication provides piston cooling
- Low engine-speed design produces less noise, heat and wear than competitor gasoline and propane engines

SERVICEABLE

- Both the engine compartment and engine provide best-in-class accessibility for easy maintenance
- Gasoline and Propane versions use the same engine block providing an easy solution for mechanics and drivers of mixed fleets
- Includes the industry's only one-stop warranty for gasoline and propane vehicles

ALLISON TRANSMISSIONS

- Shorter, sturdier shaft has increased durability (vs Ford)
- Over 44% more clutch material vs. Ford so it holds gear and lasts longer in the toughest operation
- Heavy-duty park pawl better secures vehicle
- Same transmission used across all iC Bus[®] powertrains for ease of maintenance

PSI 8.8L V8 GASOLINE

Based on feedback from our customers, we set out to develop a gasoline-powered, commercial-grade V8 engine purpose-built for school buses that features similar power and performance to diesel. This means immediate acceleration from a complete stop and greater hill climbing capability. In other words: a no-compromise solution for school districts everywhere.

PSI 8.8L V8 GASOLINE	
Cylinders	V-8
Induction System	Naturally Aspirated
Combustion System	Spark-ignited
Displacement	535 cid (8,767 L)
Compression Ratio	9:1
Bore & Stroke	4.35 in x 4.50 in (110.5 mm x 114.3 mm)
Rated Power	265 hp (197.6 kW)
Rated Torque	548 lb.-ft. (743 nm)
Cooling System	Water-cooled
Engine Coolant Capacity	16 qts
Engine Oil Capacity	7.0 qts (6.62 L)
Engine Oil Capacity (with filter)	7.5 qts (7.07 L)
Direction of Rotation	Clockwise From Front
Fuel Type	Gasoline
Dry Weight	748 lb. (339 kg)

PSI 8.8L V8 PROPANE

PSI's high-performance V8 can handle the rigors of on-road duty delivering a clean-technology solution without sacrificing power or performance. Superior engine performance is driven by an ECU that integrates and coordinates all critical functions including governor, variable ignition timing, air/fuel ratio control, knock suppression and engine protection.

PSI 8.8L V8 PROPANE	
Cylinders	V-8
Induction System	Naturally Aspirated
Combustion System	Spark-ignited
Displacement	535 cid (8,767 L)
Compression Ratio	10:1
Bore & Stroke	4.35 in x 4.50 in (110.5 mm x 114.3 mm)
Rated Power	270 hp (201 kW)
Rated Torque	565 lb.-ft. (766 nm)
Cooling System	Water-cooled
Engine Coolant Capacity	16 qts
Engine Oil Capacity	7.0 qts (6.62 L)
Engine Oil Capacity (with filter)	7.5 qts (7.07 L)
Direction of Rotation	Clockwise From Front
Fuel Type	Propane
Emissions Certification	US EPA & CARB HD-SI
Dry Weight	748 lb. (339 kg)



CUMMINS® B6.7

DURABILITY AND FUEL EFFICIENCY TO DELIVER THE LOWEST COST OF OWNERSHIP WITH MAXIMUM UPTIME.



260 HP | 660 LB-FT

KEY HIGHLIGHTS

Variable Geometry Turbocharger (VGT) delivers superior performance under all operating conditions
Electronic controls provide enhanced thermal management of the aftertreatment system (eliminates need for variable valve timing)
2007 single module has up to 70% reduction in space claim and up to 30% reduction in weight when compared to the 2009-2016 switchback system
Largest network of trained and certified technicians in the world
Well established distribution centers ensure parts are widely stocked for best-in-class availability
Available with an Eaton or Allison Transmission

EATON® PROCISSION™ TRANSMISSION

Creep mode allows controlled, low-speed maneuverability to give drivers and parents peace of mind
Hill Helper prevents roll back or forward for up to 3 seconds, based on grade and vehicle weight, for a controlled and safe launch
Dual-clutch technology preselects the correct gear for smooth delivery of power
New Eaton synthetic transmission fluid enables 150,000-mile lube & filter changes for reduced maintenance costs



CUMMINS® B6.7 DIESEL

The B-Series has an impressive legacy of over 30 years in production and over 12 million engines produced. Throughout its history, the B6.7 has been consistently updated for improved performance and efficiency. The end result is an engine that delivers uptime, big time.

Engine Type:	Diesel, 4-Cycle
Configuration:	Inline 6-Cylinder
Displacement:	409 cu. in. (6.7L)
Bore and Stroke:	4.21 X 4.88 in
Aspiration:	Variable Geometry Turbocharger
Combustion System:	Direct Injection
Engine Lubrication:	15L
Total Engine Weight (Dry):	1,150 lbs.
Horsepower:	200-260 hp
Torque:	520-660 lb.-ft.



DIAMOND LOGIC[®] AND ONCOMMAND[®]

IN EMBRACING THE MOST INNOVATIVE TECHNOLOGIES FOR THE BUS INDUSTRY.

Diamond Logic[®] includes numerous programmable features that help promote safe and responsible operation of the vehicle including the No Student Left Behind[®] feature and pre-trip inspection tools. OnCommand[®] provides a complete suite of service solutions to help you schedule regular service appointments, track maintenance history or find and order the parts you need. These beneficial technologies can help you lower the cost of vehicle ownership and increase the life cycle value of your bus.

DIAMOND LOGIC

Includes the ability to program available body integration and driver efficiency features, plus the ability to further customize to address specific application needs. Service has easy access inside & out for ease of installing incremental features. Common uses include: No Student Left Behind; exterior light check for pre-trip inspections; lights on with windshield wipers.



IC Bus pioneered the best-in-class Diamond Logic electrical system. It includes numerous programmable features which are available factory-installed.



HELPING KEEP YOUR FLEET ON TIME, ALL THE TIME

As a manager of bus fleets, we know your biggest challenges. Ensuring passenger safety. Staying on schedule. Reducing operational costs and increasing efficiency. We're here to help. OnCommand[®] Connection is the first and only all-makes diagnostics system that connects your entire fleet and provides you with the information you need to get your job done.

ONCOMMAND CONNECTION'S MISSION

Improve vehicle reliability for your entire fleet
Ensure the safety of your driver and passengers
Increase the efficiency of your operation
Reduce your costs and increase your value

ONCOMMAND CONNECTION HELPS:

Automate Driver Vehicle Inspection reports to make them faster and more accurate
Merge inspection report data with vehicle fault codes into one easy-to-read report
Be more proactive in identifying maintenance issues and addressing them before a breakdown occurs
Make informed choices to manage your fleet for maximum productivity



ALL THE TOOLS YOU NEED AT YOUR FINGERTIPS

OnCommand Connection provides a complete suite of tools to help you manage your fleet. From real-time diagnostics to vehicle location tracking, OnCommand Connection has everything you need to get your job done.

REMOTE DIAGNOSTICS FOR ALL MAKES OF VEHICLES

Icon	Feature	Icon	Feature	Icon	Feature
	Real-time diagnostics		Vehicle location tracking		Search and filter
	Vehicle health monitoring		Vehicle maintenance scheduling		Vehicle performance monitoring
	Vehicle safety monitoring		Vehicle security monitoring		Vehicle compliance monitoring



CE SERIES SPECIFICATIONS

WE ARE FOCUSED ON MAKING PRODUCTS THAT ARE BETTER AND DIFFERENT. INVESTING IN QUALITY, AND BUILDING A SCHOOL BUS THAT DRIVERS LOVE TO DRIVE.

The CE Series was engineered from the tires up to withstand the rigors of daily use and arrive at every destination on time, every time. Whether you're choosing diesel, propane or gasoline, IC Bus has built an unmatched portfolio of engine offerings to provide you with the freedom of choice.

Additionally, IC Bus provides the tools and resources to enable you to operate as efficiently as possible, and have numerous product features that allow mechanics to more easily maintain and repair buses. After all, the safe delivery of our children is a team effort and no one understands this more than IC Bus.



KEY HIGHLIGHTS

- Standard Leave No Student Behind® feature ensures drivers disable alarm at rear of bus before exiting
- Entry steps are consistently spaced for predictable footing and are the widest in the industry
- Standard 16-gauge steel body and all-steel rail construction provide increased strength
- LCD on-board diagnostic display reports fault codes for engine and chassis without the need for a reader
- 3-piece flat roped-in windshield and roped-in stationary glass for easier and more cost-effective glass replacement
- Electrically activated passenger door with standard electric vandal lock on entrance door
- Interchangeable BTI Seating features precision die-formed seat base and seat back
- Wide-opening, easy-tilt three-piece fiberglass hood provides excellent engine access for routine maintenance

29-78 PASSENGERS

CE SERIES SPECIFICATIONS

- GVWR**
23,500 - 33,000 lbs.
- CAPACITY**
29 - 78 passengers
- Wheelbase Options**
158", 169", 193", 217", 236", 254", 276"
- Single Rear Axle (4x2)**
Meritor: 15,500 - 23,000 lbs.
Dana Spicer: 15,500 - 23,000 lbs.
- Front Axle**
Meritor: 8,000 - 10,000 lbs.
Dana Spicer: 6,000 - 10,000 lbs.
Navistar Select: 8,000 - 10,000 lbs.
- Frame**
High Strength Low Alloy Steel 50,000 PSI
- Front Suspension**
Parabele Taper Leaf: 8,000 - 10,000 lbs.
- Rear Suspension**
International® Vari-Rate Spring:
13,500 - 21,000 lbs.
International Ride-Optimized Suspension (ROS Air): 15,500 - 23,000 lbs.
- Electrical System**
Alternators
 - Leeco-Neville: 12 Volt, 270 - 325 Amp
 - Delco Remy: 12 Volt, 200 AmpBattery Systems
 - EnerSys Odyssey: 12 Volt 3450 CCA
 - JCI 12 Volt 2850 CCA
 - Fleetrite® 8D: 12 Volt 1150 - 2300 CCA
- Exhaust System**
Single Horizontal Aftertreatment Device frame mounted under right rail
- Brakes**
Hydraulic Brakes with ABS and ATC
Optional Air Brakes with ABS and ATC
Air Drum Brakes and Air Disc Brakes
- Engines**
 - Diesel:
 - Cummins® ISB 6.7: 200 - 260 hp, 520-660 lb.-ft.
 - Propane
 - Power Solutions International (PSI) B 8.6L: 270 hp, 565 lb.-ft.
 - Gasoline
 - Power Solutions International (PSI) 8.6L: 265 hp, 548 lb.-ft.
- Transmissions**
 - Allison (5 or 6 speed): 2500 PTS with Direct Mount Cooler
 - Allison (5 or 6 speed): 3000 PTS with Direct Mount Cooler
 - Eaton® (7 speed): Proportion™, Dual-Clutch Automated Manual
- Fuel Tanks**
40-100 Gallons, mounted between frame and behind rear axle
- Exterior**
 - Standard Crossing Control Gate
 - Automatic Headlights (optional)
 - Electronic Stability Control and Collision Mitigation



- Interior**
 - 76" interior headroom
 - Lighted steering-wheel mounted door control and eight-way light switches
 - Water In Fuel Sensor
 - Available Cruise Control
 - Optional factory-installed IC Air
 - Entrance door stepwell - 14 ga Steel
 - Formed Treads, Naviflex™ Finish - Standard
 - Leave No Student Behind®





NAVISTAR
CAPITAL
a BMO Financial Group program

Navistar Capital is an industry leader in commercial vehicle financing with over 40 years of experience. We provide customized leases and secured loans with flexible structuring for International® heavy and medium duty commercial vehicles. Contact your local International Truck dealer for more information.

FLEETRITE

For more than 40 years, Fleetrite® Parts have provided quality parts for all truck and bus makes sold exclusively at your International Truck dealer. Every part is Navistar quality approved and is covered under a 1-year parts and labor warranty. Parts you can trust and affordability you can bank on.



DIAMOND EDGE® CERTIFIED IC Bus Dealers

This select network of International dealer service departments has passed rigorous parts and service certification guidelines to provide you with faster turnarounds, immediate parts availability and a higher level of servicing expertise. Their ongoing pledge is to maximize your uptime and deliver a best-in-class customer experience.



WE HAVE YOUR BACK SO YOU CAN KEEP MOVING FORWARD

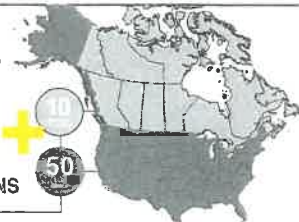
Your IC Bus dealer is one of the best in the business, and a strong link in the industry's broadest, most capable parts distribution and dealer network.

YES, WE'RE	Saturday	Sunday
OPEN	475+	45+
	Locations	Locations

No matter where you're located, you're not far from one of our

700+
DEALER LOCATIONS

[Learn more about us](#)



7,600+
TECHNICIANS

7,400+
SERVICE BAYS



www.ICBus.com

Specifications, descriptors and illustrative material in this literature are accurate as known at time of publication, but are subject to change without notice. Illustrations may include optional equipment and accessories, and may not include all standard equipment. IC Bus, OnCommand, International, Diamond Logic, Fleetrite, DriverFirst, IC Bus Full View Camera Technology, Diamond Edge are all trademarks or service marks of Navistar, Inc. BAD18001

© 2018 Navistar Inc. All rights reserved. All marks are trademarks of their respective owners. Lithographed in the United States of America.